

# 2018 ASTA Science Teachers Exchange—Japan

**BROUGHT  
TO YOU BY:**



Sony  
Education  
Foundation



**28**  
SEPT  
Friday



## DAY 1: Australia to Tokyo

Fly from Sydney to Tokyo  
on ANA, 8.55pm



**29**  
SEPT  
Saturday

Arrive Haneda Airport, 5.30am  
Transfer to accommodation by rail  
Drop bags at hotel and meet  
G.E.T. representative

## DAY 2: Tokyo

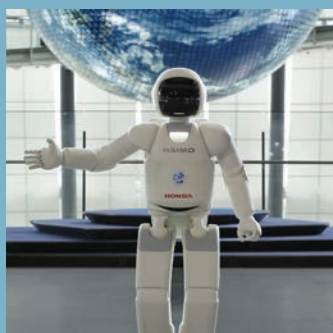
Cultural day tour of Tokyo:

- Sensoji Temple
- Sky tower
- Ginza and Imperial Palace
- Shibuya Crossing

Dinner tonight hosted by G.E.T.



**30**  
SEPT  
Sunday



## DAY 3: Tokyo to Fukushima

Spend the day in Tokyo with focus  
on STEM attractions:  
Miraikan (Asimo show)  
Panasonic Centre  
Tokyo Water Science Museum

Travel to Fukushima by  
Shinkansen



**1**  
OCT  
Monday

Transfer to local school



## DAY 4: Fukushima

Local school visit  
Observe Japanese science lesson  
Go on a school tour  
Teach lesson with interpreter

Formal dinner this evening hosted  
by SSTA  
Return to accommodation

# 2018 ASTA Science Teachers Exchange—Japan

<p><b>2</b> <b>OCT</b> Tuesday</p>	<p>Transfer to school</p>	<p><b>DAY 5: Fukushima to Tokyo</b></p> <p>Local school visit Observe Japanese science lesson Go on a school tour Teach lesson with interpreter</p>	<p>Travel to Tokyo by Shinkansen Overnight at Shiba Park Hotel Dinner at hotel</p>
<p><b>3</b> <b>OCT</b> Wednesday</p>	<p>Depart hotel by private coach to Tsukuba Science Park</p> 	<p><b>DAY 6: Tokyo to Tsukuba</b></p> <p>KEK Particle Accelerator Research JAXA Space Museum Cyberdyne Robotics NIMS Geological Museum Science Museum of Man and Society Centre for Better Living National Food Research Institute</p>	<p>Return to Tokyo by private coach Dinner hosted by SEF Overnight at Shiba Park Hotel</p>
<p><b>4</b> <b>OCT</b> Thursday</p>	<p>Free time</p> 	<p><b>DAY 7: Tokyo</b></p> <p>Visit Sony HQ for lunch and a visit to the showroom in Shinagawa</p> 	<p>Return to hotel late afternoon Dinner in Shinjuku followed by Robot Cabaret Overnight at Shiba Park Hotel</p> 
<p><b>5</b> <b>OCT</b> Friday</p>	<p>After breakfast, travel to Akihabara - electronic capital of Tokyo</p> 	<p><b>DAY 8: Tokyo</b></p> <p>Akihabara self guided/Get guided 2 hour tour Enjoy some leisure time to complete your souvenir shopping</p> 	<p>Return to Shiba Park Hotel for departure to Haneda Airport Fly from Haneda to Sydney on ANA 10.20pm</p>
<p><b>6</b> <b>OCT</b> Saturday</p>		<p><b>DAY 9: Australia</b></p> <p>Arrive in Sydney 8.45am All interstate participants will need to make their own arrangements for domestic connections</p>	