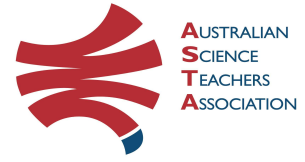




# Teacher Earth Science Education Programme



Professional Development Workshop Series in Earth and Environmental Science

## Plate Tectonics and Critical Minerals workshops

12<sup>th</sup> and 13<sup>th</sup> December 2022 at Geoscience Australia, Canberra

**Plate tectonics** explains the landforms we are familiar with on Earth today – as well as those from the past. The Plate Tectonics PD will examine the development of the plate tectonic theory, the mechanism for plate movement, and the effect of plate tectonics including where and how different rocks and natural resources form, and hazards like volcanoes and earthquakes. This workshop is highly relevant to the Year 9 science curriculum and includes suggested activities for the classroom. [The workshop will also include an overview of Geoscience Australia's role in earthquake monitoring and tsunami warnings.](#)

**Critical minerals** is a commonly used phrase. But which minerals are critical and why? The Critical Minerals PD will examine how certain minerals will aid our transition from non-renewable to renewable energy, support our high-tech lifestyles, and enable food and water security. The workshop will cover how these minerals are used, how they form and can be recycled, examine their supply and demand, plus fun activities for your classroom. [The workshop will include access to mineral and rock samples from Geoscience Australia's National Mineral and Fossil Collection.](#)

The PD workshops will include [hands-on classroom exercises](#), an [overview of the integrated TESEP rock kit](#), [plate tectonic poster and online resources](#), and an opportunity to learn more about the [role of Geoscience Australia, their displays and Education Centre](#). Presentations will be available to attendees. The topics are focused at teachers of years 7-10 secondary science students and will be of interest to upper primary science years 4-6.

Teachers and laboratory technicians are welcome to attend. An ASTA Certificate of PD Attendance will be issued to all attendees.

Workshop Topic: **Plate Tectonics**

Date: Monday 12 December 2022

Time: 9.15 am to 3.15 pm Cost: \$35

Venue: Geoscience Australia's Education Centre  
(101 Jerrabomberra Avenue, Symonston, ACT)

Workshop Topic: **Critical Minerals**

Date: Tuesday 13 December 2022

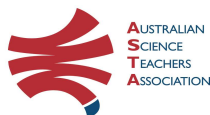
Time: 9.15 am to 3.15 pm Cost: \$35

Venue: Geoscience Australia's Education Centre  
(101 Jerrabomberra Avenue, Symonston, ACT)

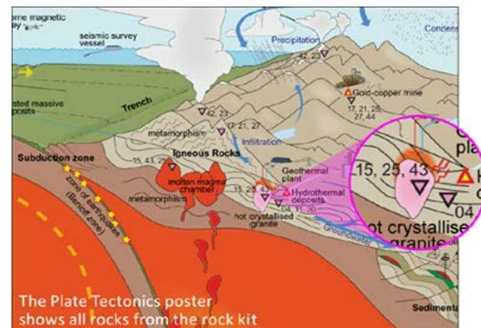
Presenter: Phil Gilmore is a geoscientist with over 25 years of experience and expertise in geological mapping and geodynamics, mineral systems and exploration, outreach and geotourism.



[www.tesep.org.au](http://www.tesep.org.au)



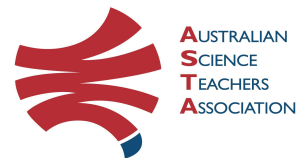
[www.asta.edu.au](http://www.asta.edu.au)



Please email your completed form to TESEP registration: [registration@tesep.org.au](mailto:registration@tesep.org.au)



# Teacher Earth Science Education Programme



To register for a workshop:

1. Please complete the following form and email to both [registration@tesep.org.au](mailto:registration@tesep.org.au) and [officemanager@asta.edu.au](mailto:officemanager@asta.edu.au)
2. You will be issued with an invoice by ASTA for payment by direct bank transfer or credit card.

<b>WORKSHOP DETAILS</b>	
Workshop Options (select one of the three options below):  <ol style="list-style-type: none"><li>1. Plate Tectonics PD, Monday 12 December 2022, Geoscience Australia</li><li>2. Critical Minerals PD, Tuesday 13 December 2022, Geoscience Australia</li><li>3. Both PD workshops (Plate Tectonics and Critical Minerals), 12 and 13 December 2022, Geoscience Australia</li></ol>	
<b>YOUR DETAILS</b>	
Name:	School:
Teaching area:	Phone (school): Phone (mobile):
Email:	
Postal address (for certificate):	
Dietary or other requirements:	
<b>PAYMENT DETAILS</b>	
Registration fee is \$35 per registrant per workshop (includes GST) and includes a \$15 voucher per registrant per workshop for use at the GA cafeteria on the day of the workshop.  The registration fee is non-refundable – though the fee is transferable to another PD workshop or for another teacher to substitute.  An invoice will be emailed to you by the ASTA (Australian Science Teachers Association, ABN 87 902 882 824). The invoice can be paid by direct bank transfer or by credit card. Contact Michelle Lollback (ASTA Office Manager) <a href="mailto:officemanager@asta.edu.au">officemanager@asta.edu.au</a> if any queries.	
<b>CERTIFICATE OF PARTICIPATION</b>	
A certificate will be issued by ASTA which states the number of PD attendance hours.  For ACT Teachers: This workshop can be counted towards Teacher Identified hours for TQI accreditation.  Please note that issuing of a certificate is conditional on workshop payment.	

Please contact us if any queries or for more information!

Please email your completed form to TESEP registration: [registration@tesep.org.au](mailto:registration@tesep.org.au)